

BONALDO

Vela

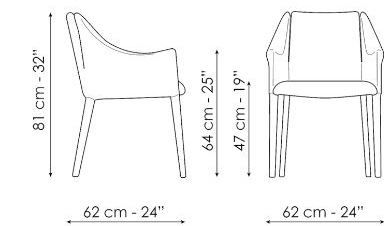


The four-legged Vela, a modern upholstered dining chair, harks back to the classic early 20th century armchair which decorated elegant bourgeois European salons. On closer inspection, all the modern elements of the design developed

by Bonaldo Lab emerge, from the sense of lightness which reminds the observer of a yacht at sea to the technological innovations, perceptible through the intensity of the surfaces, taut and ready to be transformed into welcoming forms.



Data sheet



Vela
Width: 62cm
Depth: 62cm
Height: 81cm

Finishes

LEGS

Metal



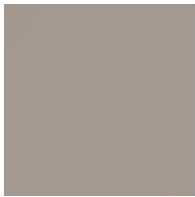
Painted metal
Mat white



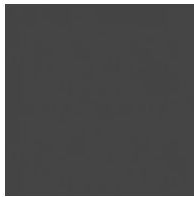
Painted metal
Mat brown



Painted metal
Mat black



Painted metal
Mat dove grey



Painted metal
Supreme anthracite

Plus Metal



Painted metal
Mat bronze



Painted metal
Mat lead



Painted metal
Mat pearl gold



Painted metal
Mat brass



Painted metal
Mat copper

Materials, fabrics, leathers, colors and finishes are approximate and may slightly differ from actual ones. You can find the complete collection of Bonaldo fabrics and leathers on the website

